

# BOB & DIANA MASON

Medical and Dental Ministry

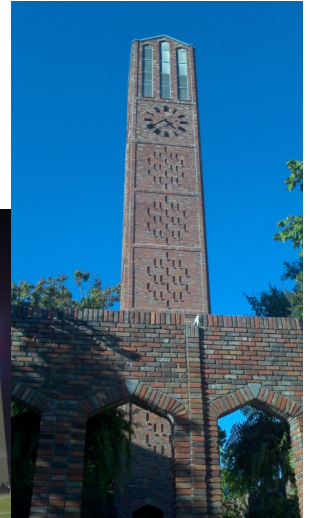
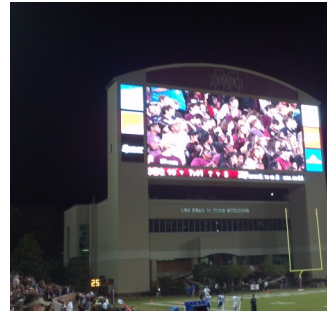
## Like Father like Son?

November 2017

A long time ago when I (Bob) was a freshman undergrad student at Mississippi State University, I became involved in Cru—or as it was known then, Campus Crusade for Christ. God used small group Bible studies, conferences, and campus-wide outreaches to accelerate my spiritual growth and ministry leadership development. Those were rich times as I saw God use various believers in his work of bringing people to himself and growing them into multiplying disciples.

Eventually, the Cru staff asked me to give overall leadership to our weekly meeting—the key gathering, worship, teaching, and training time of our campus movement.

In those days, we'd meet Thursday nights on campus and attract 75-125 students weekly. God taught me a lot about leadership, planning, delegation, and trusting him to accomplish his purposes.



Today, almost 35 years later, our son, Jordan, and his wife, Jenny, are serving as Cru staff at Cal Poly San Luis Obispo. Jenny is one of the ministry team leaders. And Jordan (pictured left with two student leaders) is giving direction to their weekly meeting.

Each week, as many as 1,000 students jam into a local church for their key gathering of worship, teaching, and training. God is using his exceptional leadership skills to influence many for eternity.

Shortly before Jesus ascended into heaven, he called his followers to be about developing multiplying disciples. From Mississippi State to Cal Poly to health sciences campuses around the world, we are trusting God to continue that process until everyone has heard about the eternal hope he offers.

Thank you for building into the lives of so many.

*Bob & Diana*



### Upcoming Ministry Events

January 12-13 METS Whole Person Care Conference, Jackson, MS  
January 12-13 METS Whole Person Care Conference, Loma Linda, CA

March 24-31, Dominican Republic Medical Mission Trip

April 16-20, METS Whole Person Care Conference, Havana, Cuba

June 8-10, METS Whole Person Care Conference, Redlands, CA

June 7-July 11 Whole Person Care Preceptorship

June 30-July 7 Pre-Med/Pre-Pro Healthcare Student Mission

Info @ [medsn.org](mailto:medsn.org)



A caring community passionate about connecting people to Jesus Christ

Redlands, CA 92373 \* 909-335-9877 \* [masons@medsn.org](mailto:masons@medsn.org) \* [medsn.org](http://medsn.org) \* [bobdiana.org](http://bobdiana.org)