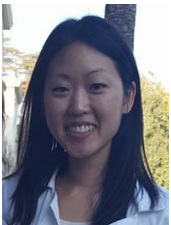


## “It’s Time...”

**Ivy League Dreams** *“There has been an ongoing conversation about whole person care in the Boston healthcare community, but it has not contained a Christian voice. I’ve long believed that needed to be added, but never thought the time was right. After our discussion today, I think the time has come for a Christian perspective to be introduced to this discussion.”* My heart jumps as Michael, a medical school instructor in Boston, tells me this in a conference call last Fall.



Jessica, a resident physician in California had facilitated this meeting. While in medical school at Boston University, Jess attended our 2016 Whole Person Care Preceptorship. That summer she learned to care for the spiritual needs of her patients and became convinced this training could benefit professionals and students in Boston—one of the world’s most influential healthcare arenas. She suggested this to Michael and others with the Boston Healthcare Fellowship. After this call, it seems God may make her dream a reality. And He did that last month.

**Challenge Arises** Shortly after Bob and Diana arrive in Boston for the METS conference, one of our faculty calls. “My father-in-law is gravely ill and will likely die soon.” Bob says, “You need to stay home and be with your family.” We pray for this family yet wonder, “*Will God supply a replacement speaker within the next few hours?*” We text Jenn, a physician in Houston explaining our urgent need. Can she be in New England by Friday? Within 10 minutes, Dr. Jenn replies, “I’ll be there.” God provides!



North of Boston, the iconic Motif Number 1.



**Held at Harvard Medical School**, the first ever-Boston METS Whole Person Care Conference included conference faculty Michael, a midwest plastic surgeon. At left, he discusses a biblical perspective of work, calling, and ministry. Also, Alisha, a Harvard Medical School alum and Preceptorship alum trains conference attendees to take a spiritual history.

During the field practicum, conferees apply what they have learned. Patients are most appreciative with some expressing a desire to know more about connecting with God. At least one patient indicates a decision for Christ.

You are impacting key people in influential places for the Kingdom. Thank you for standing with us in this continuing adventure and journey of faith!

*Bob & Diana*



A caring community passionate about connecting people to Jesus Christ